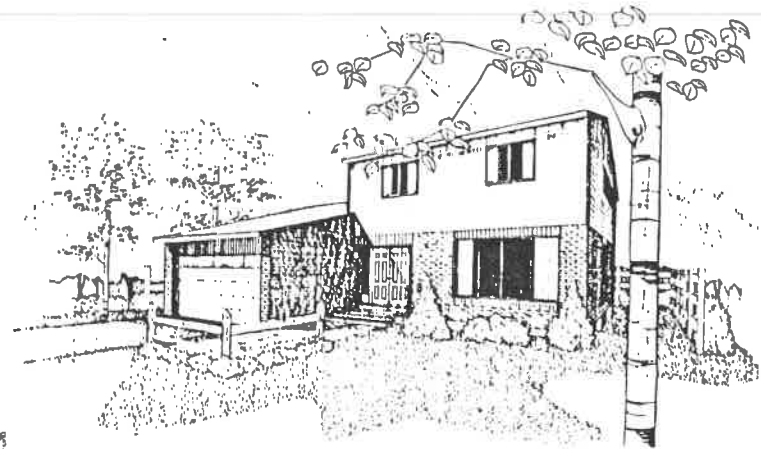


ELEVATION 1



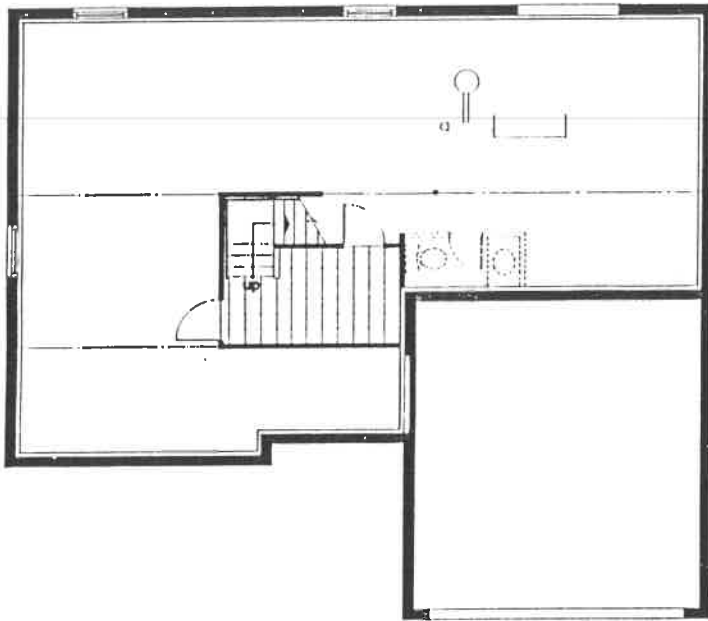
ELEVATION 2

Many design features add exceptional interest to this distinguished 3-bedroom single family home.

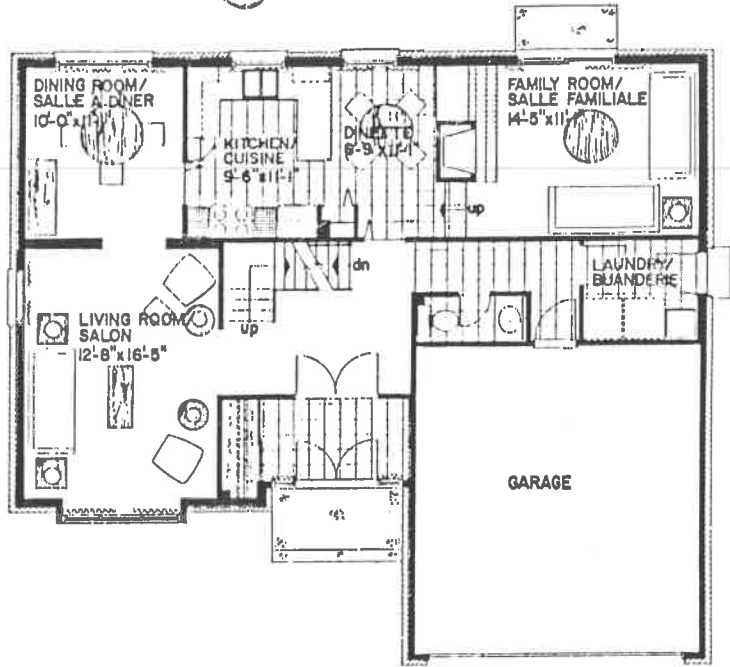
- Focal point of the ground floor is the impressive centre hall, with access via the large heated vestibule with two pairs of double doors.
- Spacious living room, with windows in two walls.
- Sunken family room, with heat-circulator fireplace and sliding glass doors.
- Extra-large kitchen includes roomy dinette area.
- Formal dining room.
- Secluded master bedroom, with dressing area and complete bathroom ensuite.
- Upstairs, there's a second 5-piece bathroom, and on the ground floor a powder room.
- 2-car garage provides direct access to the house.

NORMANDIE

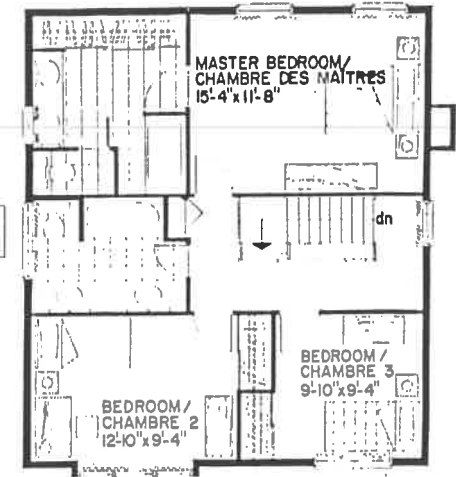




Basement Plan Projet de sous-sol



Ground Floor Plan Projet rez-de-chaussée



Second Floor Plan Projet deuxième étage

NORMANDIE

1960 sq. ft

Basic Price Prix de base	\$
1st Mortgage 1ère hypothèque	\$
Full Down Payment Acompte complet	\$
Series Série	\$
Net Down (if applicable) Acompte net (s'il y a lieu)	\$
2nd Mortgage 2e hypothèque	\$
Total Total	\$

Princ. & Interest Princ. & Intérêts	\$
Estimated Taxes Taxes estimatives	\$
2nd Mortgage P & I (if applicable) 2e hypothèque P & I (s'il y a lieu)	\$
Estimated Total Monthly Payment Versement mensuel total estimatif	\$
Prepared by Préparé par	
Phone Tél.	
Date	

Prices, plans and standard features are subject to change without notice.

All interior dimensions are approximate and measured to the inside face of walls.

Les prix, plans et détails montrés peuvent changer sans préavis.

Toutes les dimensions intérieures sont approximatives et mesurées à partir de la surface intérieure des murs.



**energy-
wise home**